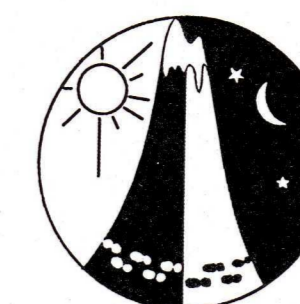


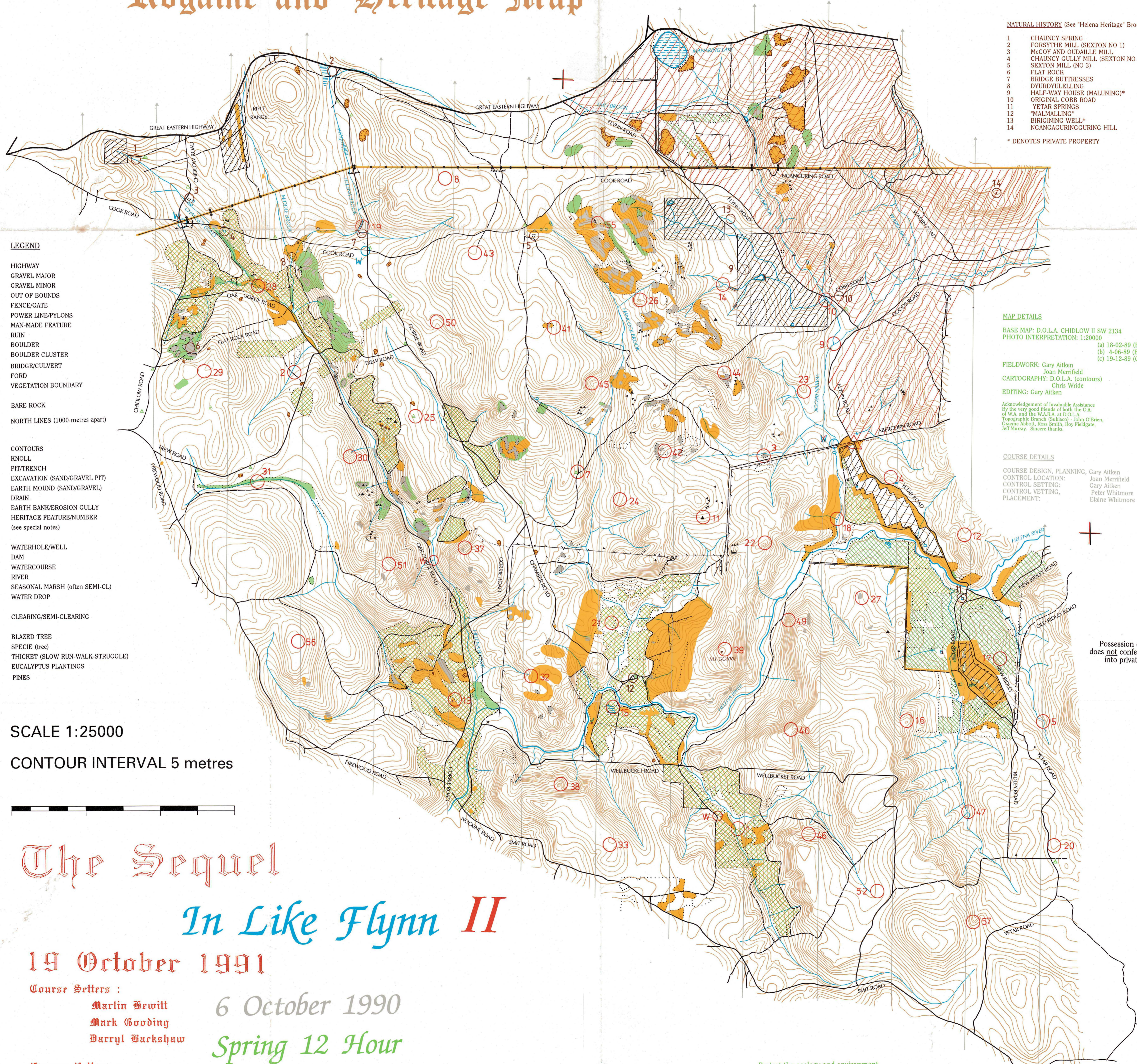
# Chauncy Spring Manaring Lagoon

## Mt Gorrie

### Rogaine and Heritage Map



Copyright, October 1990,  
Western Australian Rogaining Association



#### NATURAL HISTORY (See "Helena Heritage" Brochure)

- 1 CHAUNCY SPRING
- 2 FORSYTHE MILL (SEXTON NO 1)
- 3 MCCOY AND OUDAILLE MILL
- 4 CHAUNCY GULLY MILL (SEXTON NO 2)
- 5 SEXTON MILL (NO 3)
- 6 FLAT ROCK
- 7 BRIDGE BUTTRESSES
- 8 DYURDULLELLING
- 9 HALF-WAY HOUSE (MALUNING)\*
- 10 ORIGINAL COBB ROAD
- 11 YETAR SPRINGS
- 12 "MALMALLING"
- 13 BRIGGING WELL\*
- 14 NGANGAURINGGURING HILL

\* DENOTES PRIVATE PROPERTY

#### LEGEND

- HIGHWAY
- GRAVEL MAJOR
- GRAVEL MINOR
- /// OUT OF BOUNDS
- FENCE/GATE
- POWER LINE/PYLONS
- MAN-MADE FEATURE
- RUIN
- BOULDER
- BOULDER CLUSTER
- BRIDGE/CULVERT
- FORD
- VEGETATION BOUNDARY
- BARE ROCK
- NORTH LINES (1000 metres apart)
- CONTOURS
- KNOLL
- PIT/TRENCH
- EXCAVATION (SAND/GRAVEL PIT)
- EARTH MOUND (SAND/GRAVEL)
- DRAIN
- EARTH BANK/EROSION GULLY
- HERITAGE FEATURE/NUMBER (see special notes)
- WATERHOLE/WELL
- DAM
- WATERCOURSE
- RIVER
- SEASONAL MARSH (often SEMI-CL)
- WATER DROP
- CLEARING/SEMI-CLEARING
- BLAZED TREE
- SPECIE (tree)
- THICKET (SLOW RUN-WALK-STRUGGLE)
- EUCALYPTUS PLANTINGS
- PINES

SCALE 1:25000

CONTOUR INTERVAL 5 metres



#### MAP DETAILS

BASE MAP: D.O.L.A. CHIDLOW II SW 2134  
 PHOTO INTERPRETATION: 1:20000  
 (a) 18-02-89 (B/W) M.R.G.  
 (b) 4-06-89 (B/W) S.P.  
 (c) 19-12-89 (Colour) M.R.G.

FIELDWORK: Gary Aitken  
 Joan Merrifield  
 CARTOGRAPHY: D.O.L.A. (contours)  
 Chris Wilde  
 EDITING: Gary Aitken

Acknowledgement of Invaluable Assistance  
 by the very good friends of both the O.A.  
 of W.A. and the W.A.R.A. at D.O.L.A.  
 Topographic Branch (Shelton) - John O'Brien,  
 Graeme Abbott, Ross Smith, Roy Fieldgate,  
 Jeff Murray. Sincere thanks.

#### COURSE DETAILS

COURSE DESIGN, PLANNING, Gary Aitken  
 CONTROL LOCATION: Joan Merrifield  
 Gary Aitken  
 CONTROL SETTING: Peter Whitmore  
 PLACEMENT: Elaine Whitmore

Possession of this map  
 does not confer right of entry  
 into private property

## The Sequel

## In Like Flynn II

19 October 1991

Course Sellers :

Martin Hewitt  
 Mark Gooding  
 Barryl Barkshaw

6 October 1990

Spring 12 Hour  
 Rogaine

Course Sellers :

Bob Pritchard  
 John Pritchard

Protect the ecology and environment  
 Take only memories  
 Leave only your footprints

## Control Descriptions

1	the very shallow gully #	
2	a gravel heap, SE side #	20 pts
3	the road/gully crossing *	
4	a summit #	
<hr/>		
7	the saddle *	
8	a lost banner *	
9	a rock surface (SW ern), SW side *	
10	a defour in the track, then 100m at 210°	
11	the blazed tree, then 300m at 235°	30 pts
12	the saddle	
13	the head of the watercourse *	
14	on an indistinct track #	
15	a loo (out of order) #	
<hr/>		
19	the watercourse bend, S side	
20	a black stump (eastern, 2m high)	
21	a 2.5m boulder cluster, S side	
22	the summit	
23	a knoll on the spur	
24	a 2m boulder cluster	40 pts
25	the watercourse junction (indistinct)	
26	the road/watercourse crossing, then 100m at 335°	
27	the distinct watercourse (lower part)	
28	a bend in a track	
29	upper part of a gully	
30	the broad gully, on an indistinct track	
<hr/>		
31	head of the gully	
32	in the gully [sorry about the blue form line]	
33	inside the curve in the N track	
34	the summit	
35	S edge of a thicket	
36	a boulder (eastern, 1.2m, E side)	50 pts
37	a 4m/2m boulder, SW side	
38	head of the gully	
39	the distinct watercourse, middle part	
40	an indistinct track/gully crossing	
41	head of a watercourse	
<hr/>		
43	the saddle	
44	on the spur (narrow part)	
45	the road/watercourse crossing, then 150m S	
46	the watercourse junction	
47	between 2 rock surfaces (60mX25m & 20mX20m)	60 pts
48	a summit	
49	a 1.5m boulder	
50	2m boulders on S side of the spur top	
51	the road junction, then 100m at 40°	
52	a big dead tree standing on the S side of the broad gully bottom	
<hr/>		
55	on the spur (top of a steep rocky section)	
56	head of the watercourse (there are short unmapped headstreams to S)	
57	on the spur	70 pts
58	4m boulders, E side	
59	on the small spur	
60	in the gully	
<hr/>		
61	a 2m boulder, E side	
62	foot of a 3m cliff by the watercourse	
63	a pool (about 20mX30m)	80 pts
64	an apiary marker, then 150m at 100°	
65	the saddle	
66	on the spur (top of rocky section)	
<hr/>		
67	the summit	100 pts
68	in the gully	